

Assembly Instructions for 4-Legged Gaming Stools

Tools required: 10mm spanner or battery-operated impact wrench with a 10mm socket.

Step 1.

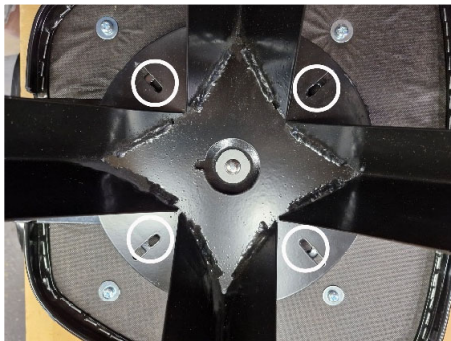
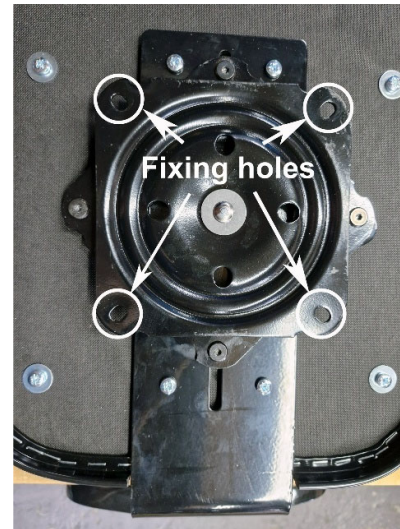
Place the seat/backrest assembly upside down on a sturdy table or chair.

Step 2.

Ensure that the swivel mechanism is rotated as shown on the right so that the 4 fixing holes in the swivel mechanism are easily accessible, or “exposed”.

Step 3.

Remove the 4 x M6 bolts and nuts used to attach the 4-legged frame to the swivel mechanism from the 4 fixing holes.

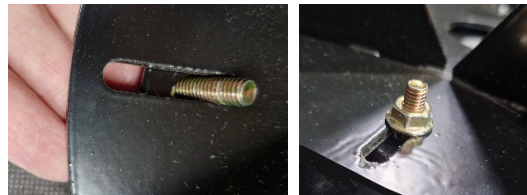


Step 4.

Place the 4-legged frame on top of the swivel mechanism making sure to align the 4 fixing holes in the 4-legged frame with those of the swivel mechanism.

Step 5.

Insert the M6 bolts ‘upwards’ through the swivel mechanism and 4-legged frame.



Step 6.

Fit the nuts to the bolts. **Do not** tighten the nuts until all 4 bolts have been fitted.



Step 7.

To complete the assembly, securely tighten the 4 nuts using a 10mm spanner or impact tool with a 10mm socket.